

## Training the next generation of scientists for Maternal and Fetal Health

iPLACENTA is a major doctoral programme in Maternal and Fetal Health funded by the European Union. The 15 early-stage researchers (ESRs) in the programme are working with world-leading academics, clinics and industry partners in 10 European countries, forming a new network of international expertise.

The iPLACENTA fellows collaborate within and across three work packages with the following aims:

- 1) **in vitro placenta modelling** to develop state-of-the-art models to mimic the placenta in vitro
- 2) **integrative placenta modelling** to integrate multi-dimensional, multi-omics data derived from placental tissues to establish an evidence-based cause and effect relationship for early/late onset pre-eclampsia (PE) and intra-uterine growth restriction (IUGR)
- 3) **imaging placenta** to characterise and validate new methodologies for in vivo placenta modelling and clinical prediction of early/late onset PE and IUGR



### The network



### Partners



### Coordinator

Project coordinator: **Dr Colin Murdoch**  
Project manager: **Mirren Augustin**



**University of Dundee**  
School of Medicine, Dundee, DD1 9SY  
United Kingdom

[www.iplacenta.eu](http://www.iplacenta.eu)  
[iplacenta@dundee.ac.uk](mailto:iplacenta@dundee.ac.uk)



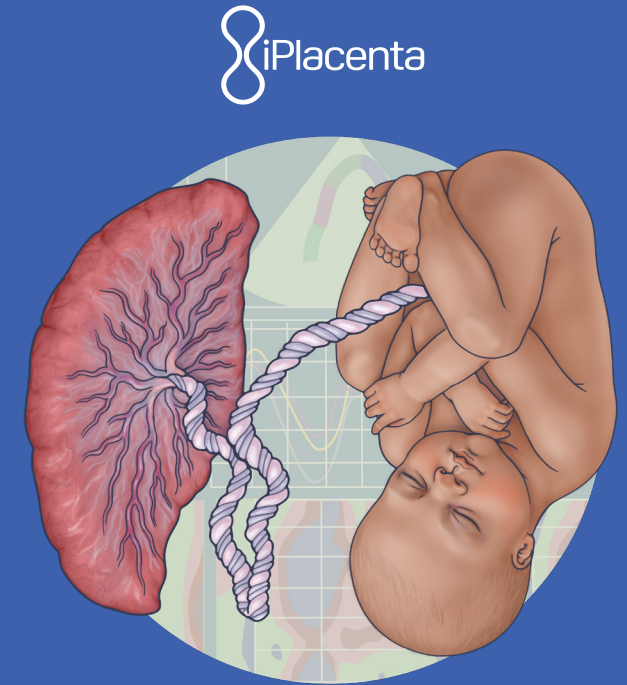
The contents of this publication are the sole responsibility of the author and do not necessarily reflect the opinion of the European Union.



This project has received funding from the European Union's Horizon 2020 research and innovation programme under the Marie Skłodowska-Curie grant agreement No 765274



Funded by the European Union

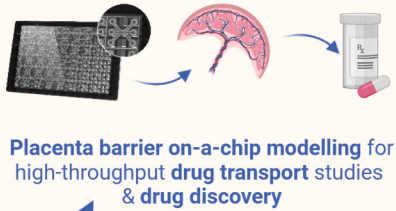


## Innovation in modelling placenta for Maternal and Fetal Health

Artwork: Audrey E. Bell - Copyright reserved

# Innovation in modelling placenta for Maternal and Fetal Health

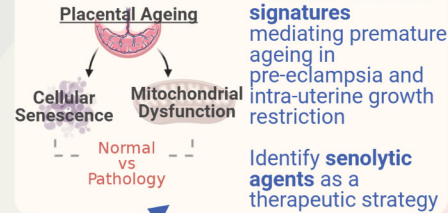
## ESR1: Gwenaëlle Rabussier



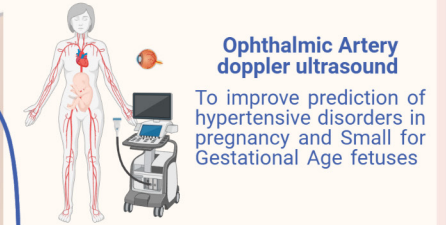
## ESR2: Camilla Soragni



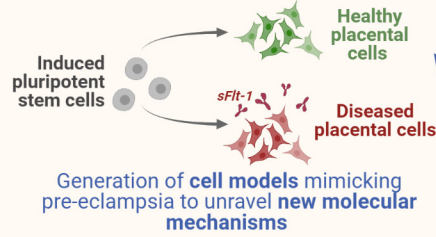
## ESR7: Samprikta Manna



## ESR13: Carolina Di Fabrizio



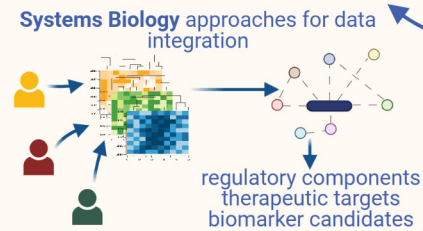
## ESR4: Agathe Lermant



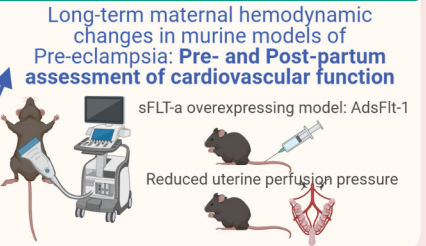
## ESR6: Clara Apicella



## ESR9: Julia Scheel



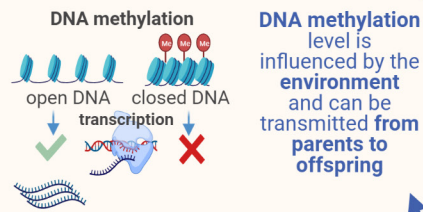
## ESR11: Yolanda Correia



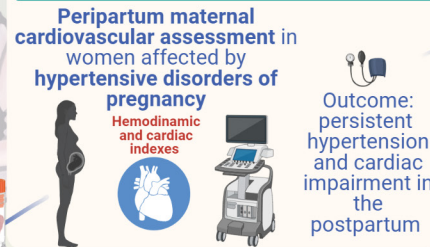
## ESR12: Ignacio Valenzuela



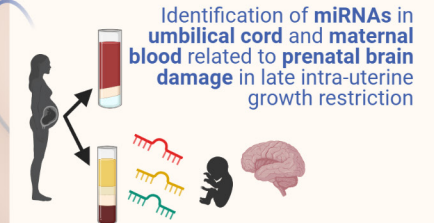
## ESR8: Camino Ruano San Martin



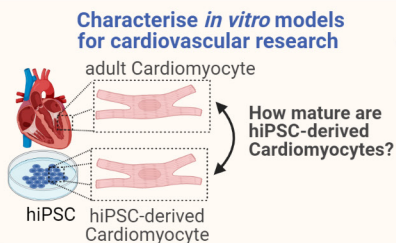
## ESR15: Veronica Giorgione



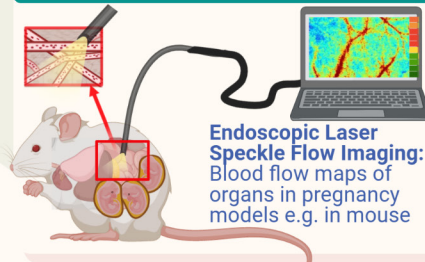
## ESR14: Gabriela Loscalzo



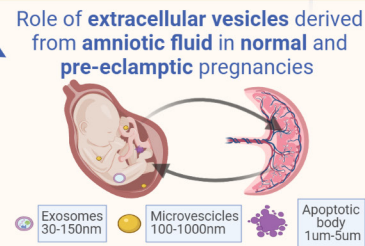
## ESR5: Jana-Ch. Hegenbarth



## ESR10: Lukas Markwalder



## ESR3: Natalia Gebara



## In vitro Placenta Modelling

## Integrative Placenta Modelling

## Imaging Placenta

